

Digital Thermostat Module Model XH-W1401



Item: [Digital Thermostat Module Model XH-W1401](#)

Description: Digital [Thermostat](#) Module

Model: XH-W1401

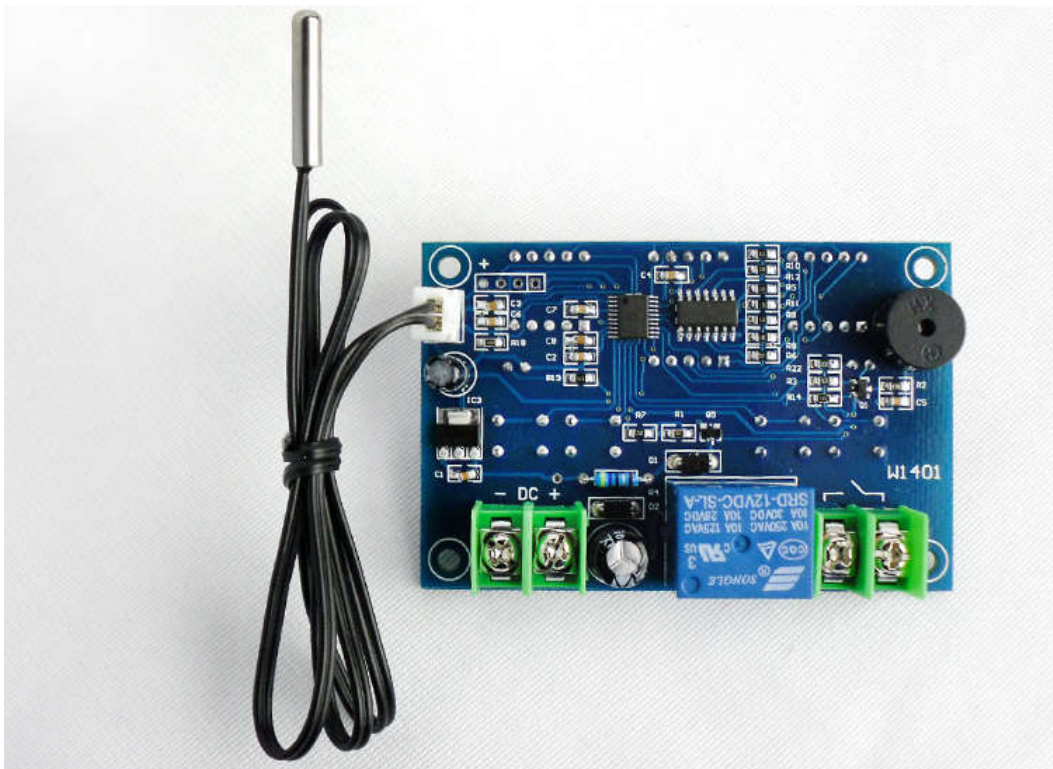
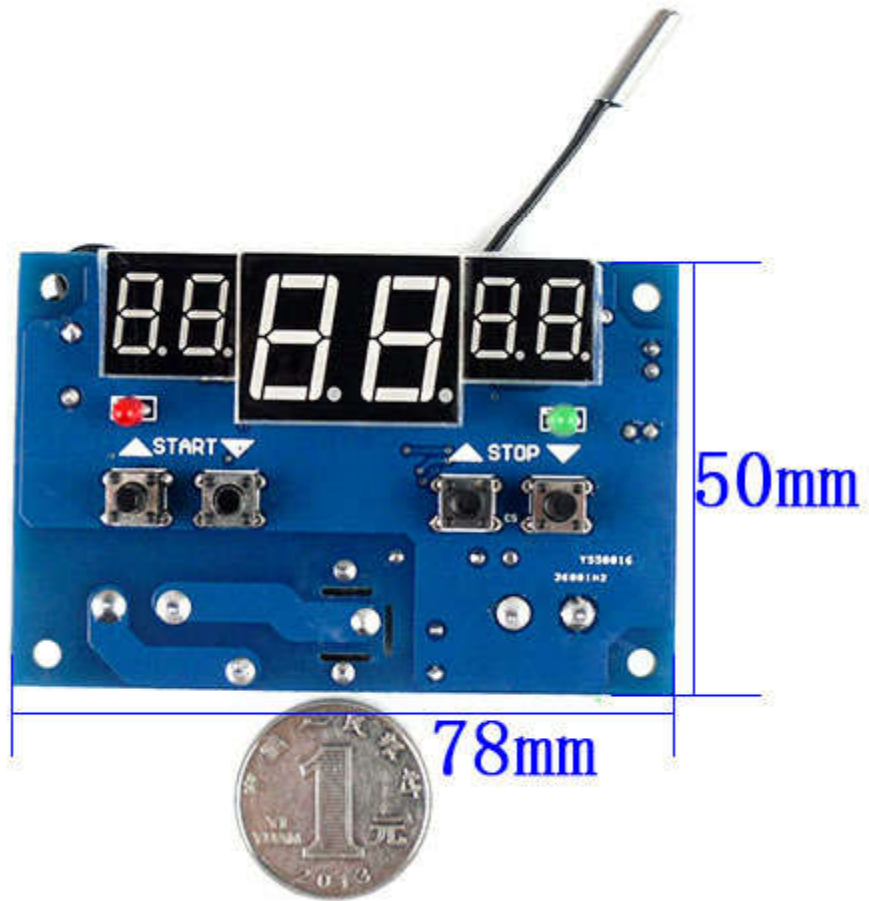
Thermostat Range: -9°C to 99°C

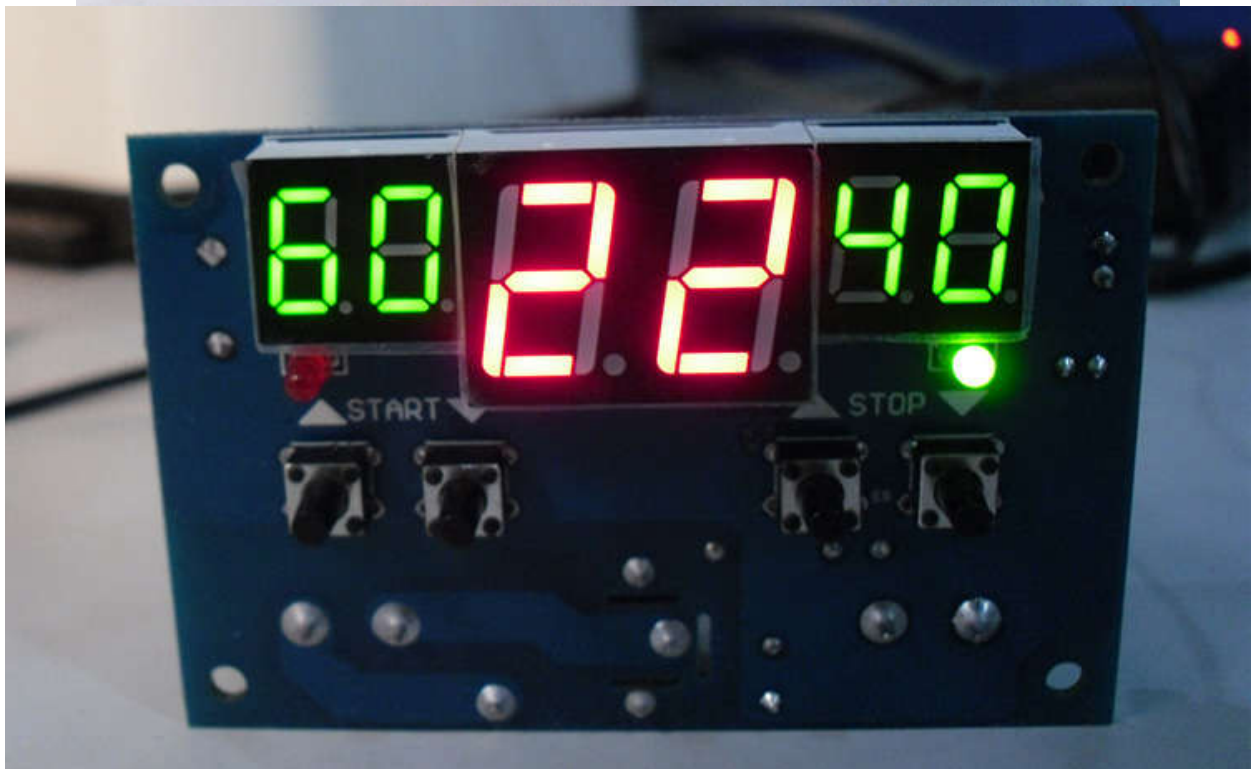
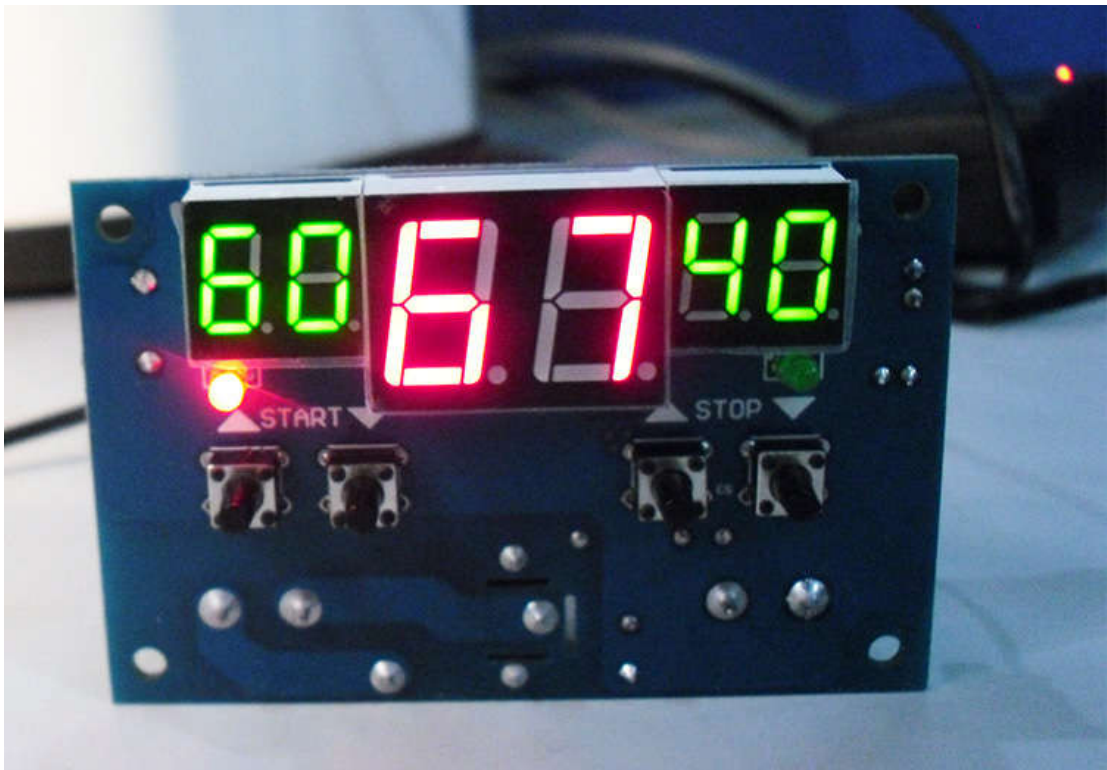
Thermostat Accuracy: 1°C

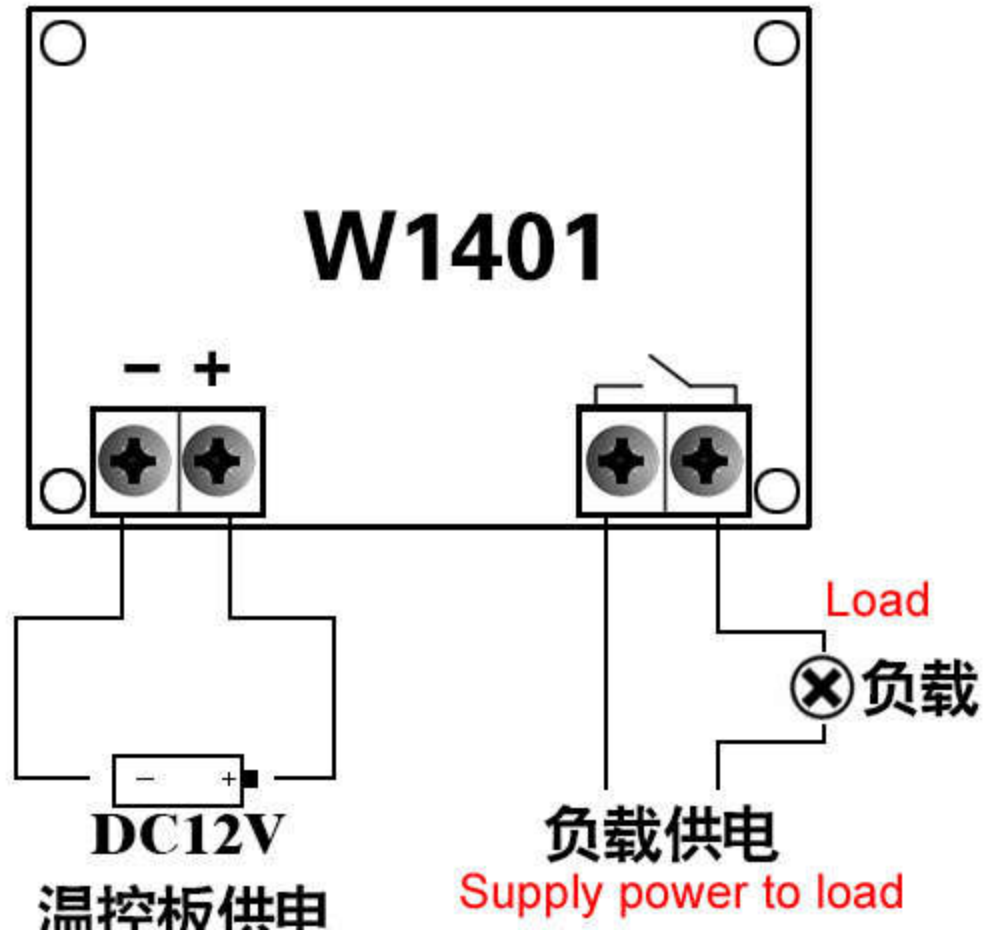
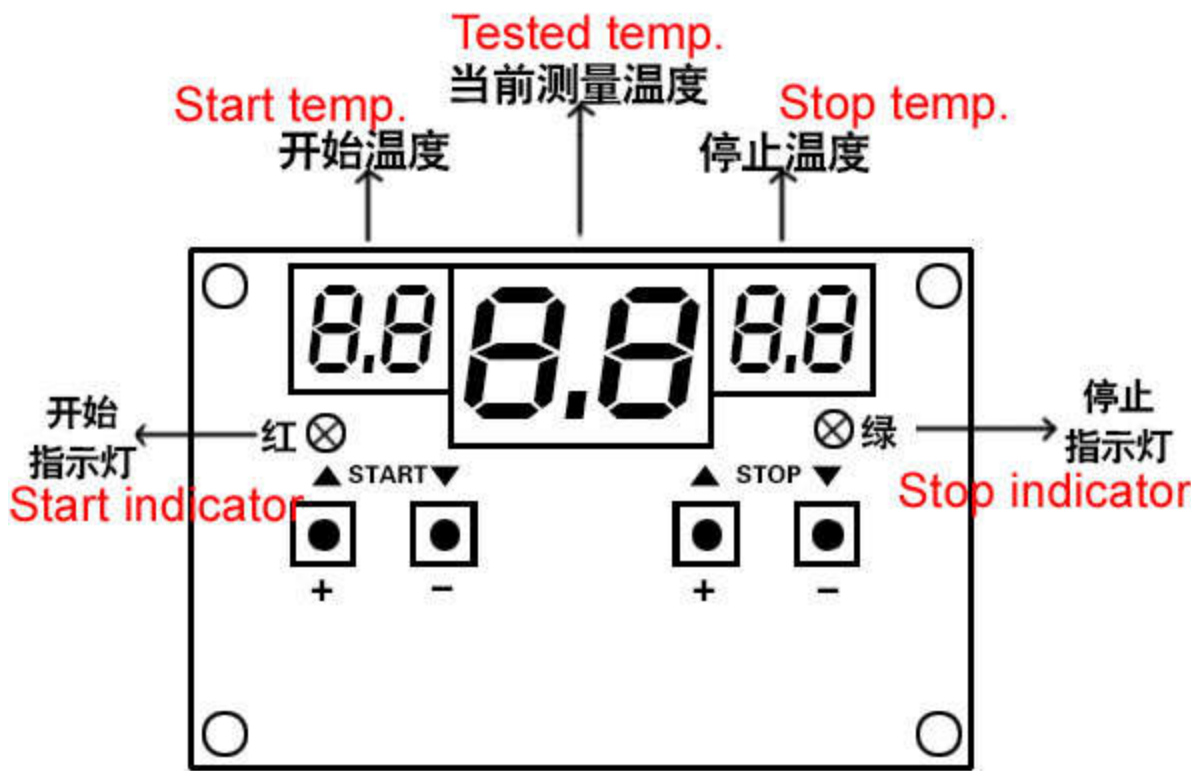
Power Supply: DC9-12V

Output: Electric relay output ,capacity 220V 10A/12V 10A

For cooling or heating temperature control







Operation on “Digital Thermostat Module Model XH-W1401”

Start Indicator light: START(red) light, meaning relay is closed, device start working;

Stop Indicator light: STOP(green) light, meaning relay is off, device stop working;

Screen: Middle red number means the detected temperature;

Left green number means the set start temperature;

Right green number means the set stop temperature;

Arrow(down or up) means to set temperature;

1. High temperature start – Cooling Mode: Set the starting temperature $>$ stop temperature, when the detected temperature \geq start temperature, the relay is closed, refrigeration equipment work; when the detected temperature \leq stop temperature, the relay is off, refrigeration equipment stops working. For example: Set the start temperature is 30 °C, stop temperature is 25 °C, when the detected temperature ≥ 30 °C, the relay is closed, start indicator (red) light; when the detected temperature ≤ 25 °C, the relay off, stop instruction light (green) light.

2. Low temperature start – Heating mode: Set the start temperature $<$ stop temperature, when the detected temperature \leq starting temperature, the relay is closed, heating equipment work; when the detected temperature \geq stop temperature, the relay off, heating equipment stop working. For example: Set the start temperature is 25 °C, stop temperature is 30 °C, when the detected temperature ≤ 25 °C, the relay is closed, start indicator (red) light; when the detected temperature ≥ 30 °C, the relay off, stop instruction light (green) light.