

Smart Switch (MJ)

Bluetooth mesh instruction

1. Product introduction

The wall switch (Bluetooth mesh smart switch) is a light control switch that uses the Mijia Bluetooth mesh communication protocol. It is easy to install, without changing the original lighting equipment and lines, and can directly replace the traditional switch. It needs to be used with the Xiaomi gateway to achieve remote control, timing control, scene control and other functions. In addition, this product can be used with the Xiaomi XiaoAi speaker to achieve voice interactive control.

Installation notes:

*This product should be installed and debugged by qualified professionals in accordance with the requirements of electrical specifications and product manuals.

*This product is for indoor use only. It must be installed with the power off. After installation, power on to configure the product APP.

2. Basic parameters

Working voltage: 100V-240V, 50Hz/60Hz (neutral live wire) 220V,-50Hz (single live wire)

Working current: 5A Max (pure resistive load) - zero live wire 2.5A Max (pure resistive load) - single live wire

Load type: Incandescent lamp 300W/channel, LED lamp 120W/channel, Energy-saving lamp 200W/channel

Product material: Fire retardant shell

Operating environment: temperature 0°C~40°C, relative humidity less than 95%

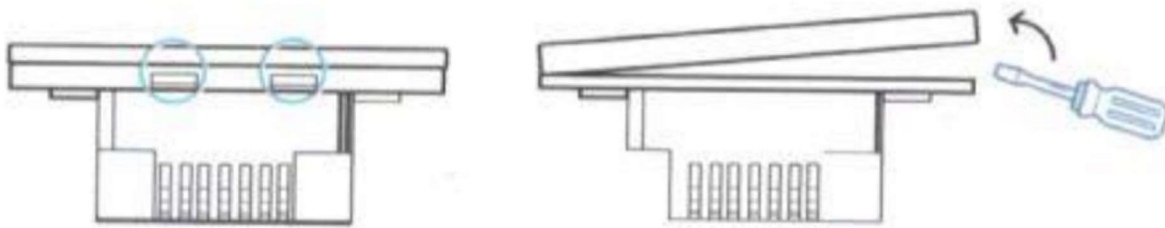
Communication protocol: Bluetooth mesh

Control method: Mijia APP|Xiao Ai

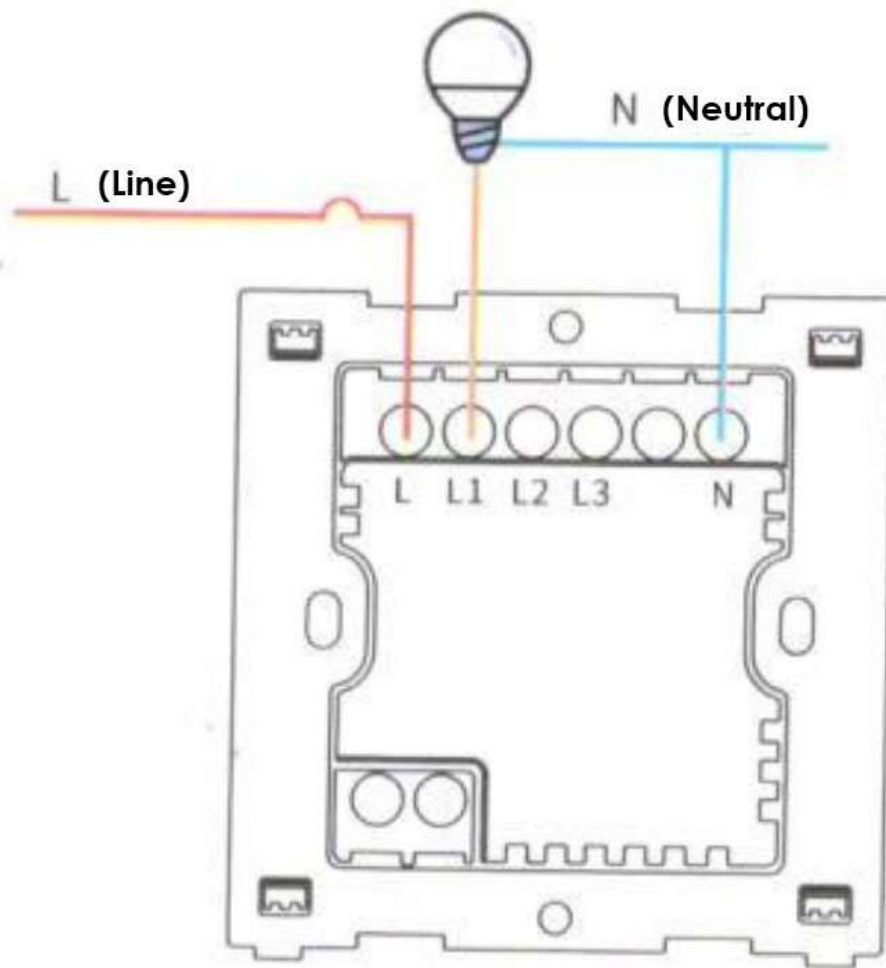
3. Installation Guide (wiring according to the version purchased)

Disconnect the main power supply. The specific installation method of the wall switch is as follows:

1. Use a flat-blade screwdriver to lift up the switch panel.



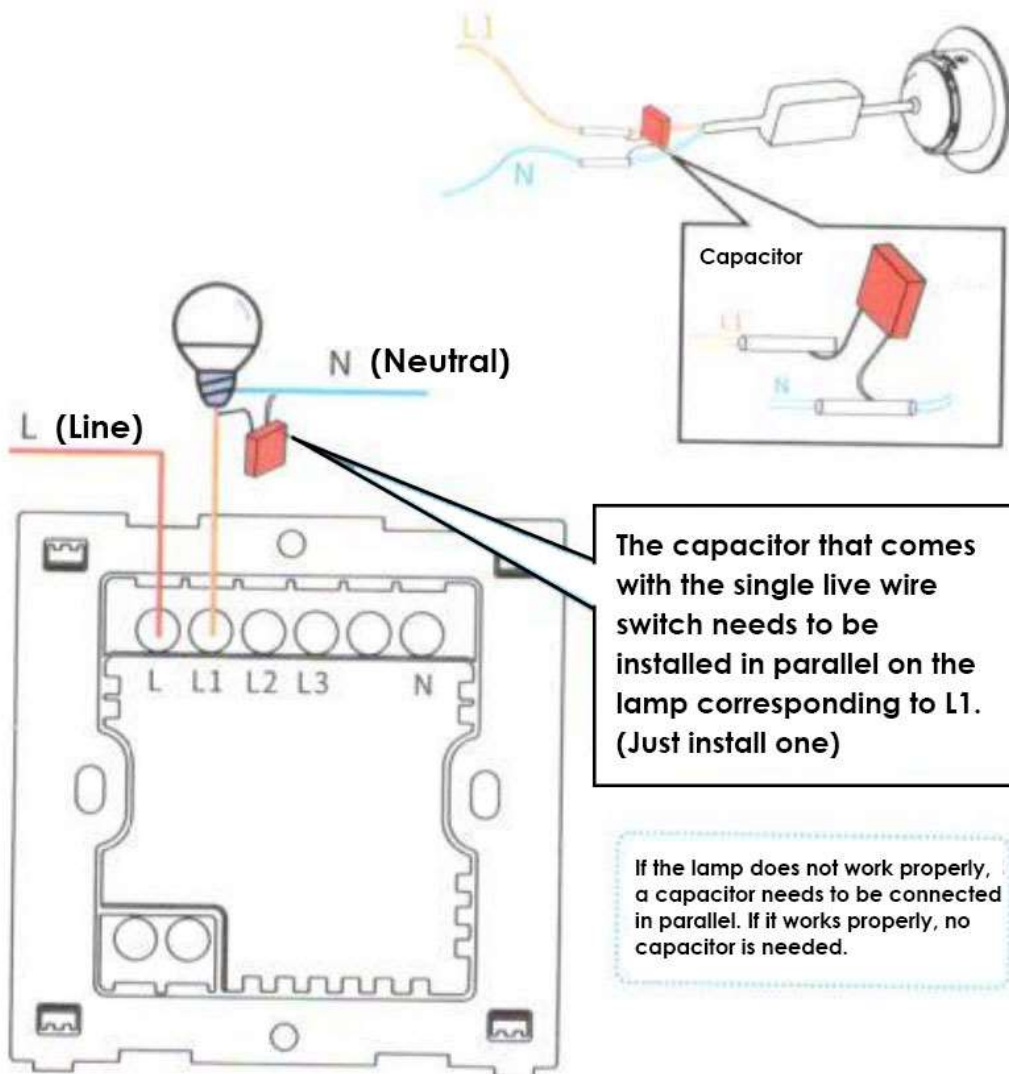
2. The wiring is as shown below:



(1) Schematic diagram of zero and live wire switch wiring

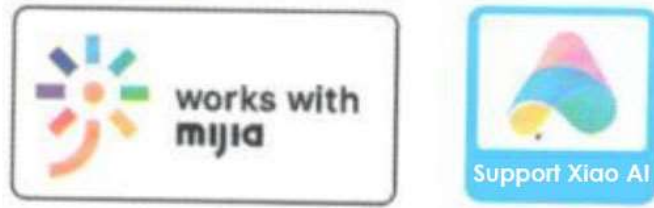
The capacitor that comes with the single live wire switch needs to be installed in parallel on the lamp corresponding to L1. (Just install one)

If the lamp does not work properly, a capacitor needs to be connected in parallel. If it works properly, no capacitor is needed.



(2) Schematic diagram of single live wire switch wiring

4. Connect to Mijia



This product has been connected to Mijia and can be controlled through the Mijia APP or Xiaoai voice control. "Works with mijia" and "Supports Xiaoai control" are only software-level verifications. Xiaomi is not responsible for the production, manufacturing, standard implementation, quality supervision, etc. of this product or enterprise.

Connect to Mijia

Note: This product needs to be used with Xiaoai speakers and other products to achieve intelligent control. Please scan the code to view the list of compatible products:



Note: Before connecting the device, be sure to turn on the "Bluetooth Gateway" button on the mesh gateway or Xiaoai speaker APP page before using it

Install Mijia APP

Scan the product QR code, or search for "Mijia" in the App Store, download and install the Mijia APP; users who have installed the Mijia APP will be directed to the device link page.



Add device

Method one

1. Make sure the Xiaoai speaker has been networked and upgraded to the latest version (see the Xiaoai speaker manual for details);
2. Turn on the power of the product, press and hold for 5 seconds (trigger to enter the pairing state, a single indicator light flashes for 60 seconds, dual control, random sticking, scene switch pairing can be performed) In the pairing state, press and hold for 5 seconds, all button indicators flash, and the switch enters the network configuration state, and the Mijia APP can be used for network configuration.
3. Say "Xiao Ai, discover devices" to the Xiao Ai speaker and follow the voice guidance to add the device.

Method two

1. Open the Mijia APP and log in to your account;
2. Turn on the power of the product, press and hold for 5 seconds (trigger to enter the pairing state, a single indicator light flashes for 60 seconds, dual control, random sticking, scene switch pairing can be performed) In the pairing state, press and hold for 5 seconds,

all button indicators flash, and the switch enters the network configuration state, and the Mijia APP can be used for network configuration.

3. Click the "+" button in the upper right corner of the Mi Home APP to enter the device adding page. Click the "Scan product QR code" button in the upper right corner and follow the prompts to add and use the device.

Tip: When the product QR code cannot be scanned, you can search for the product name to complete the device addition. In addition, due to the continuous upgrade of the Mi Home APP, the actual operation may be slightly different from the above description. Please follow the instructions in the current Mi Home APP.

Xiaoai classmates control/query

After adding the device, you can use XiaoAI under your Xiaomi account to control and query the device.

Voice operation example:

Xiao AI, turn on the living room switch.

Xiao AI, turn off the living room switch.

Xiao AI, turn on all the switches.

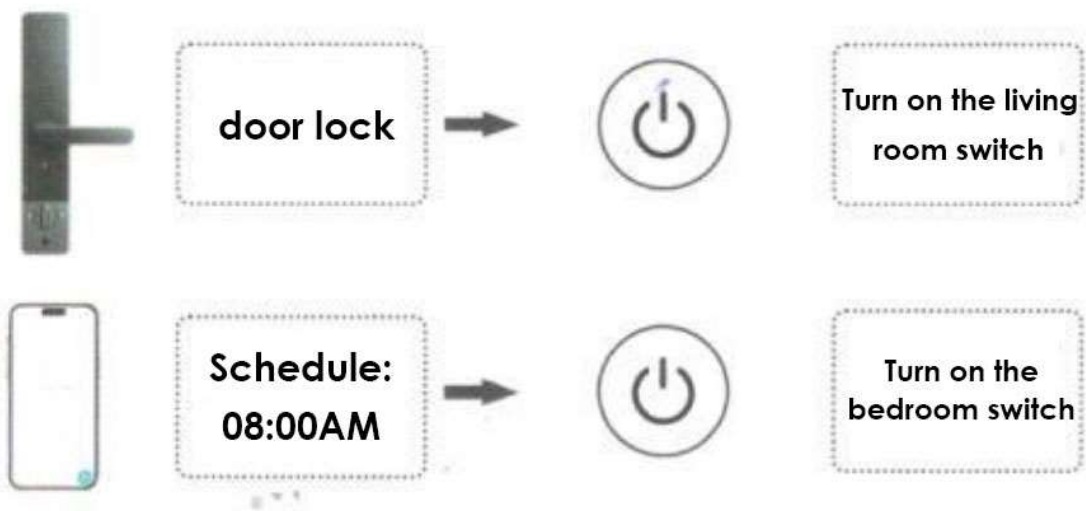
Xiao AI, open the bedroom at 8 o'clock in the morning.

For more voice control commands, please visit "My" > "Product Encyclopedia" in the Mi Home APP to view

Intelligent scene linkage

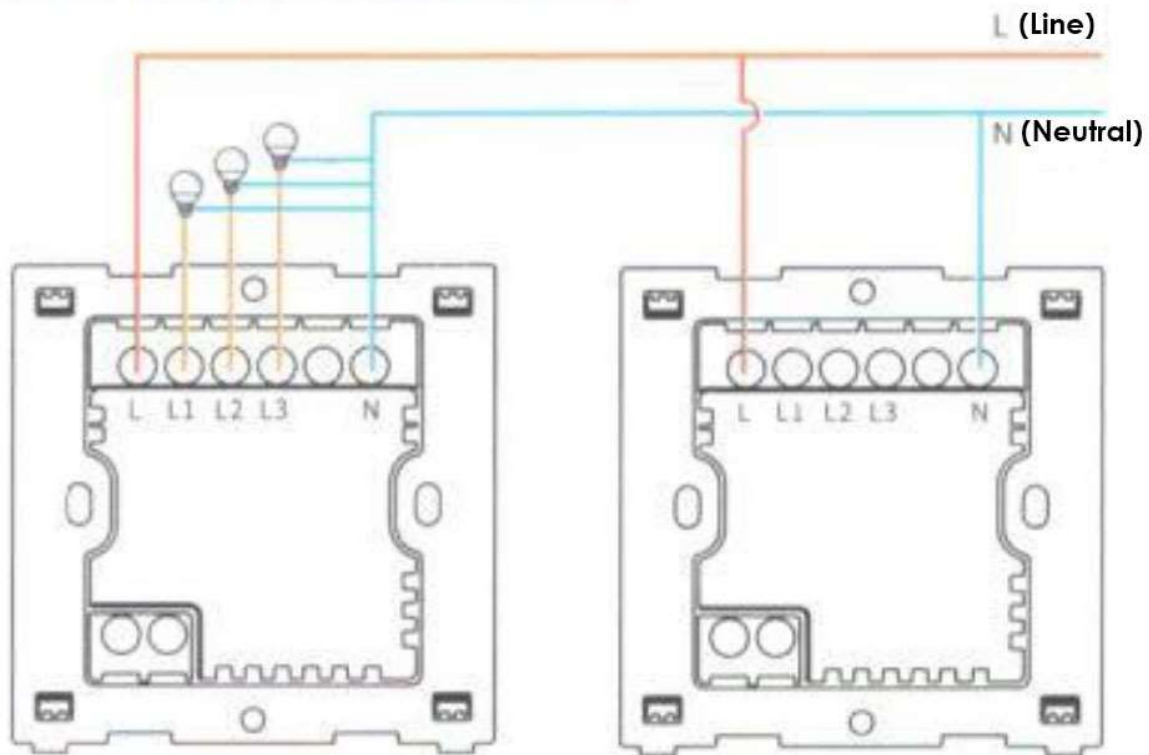
This product can create smart scenes through the Mi Home APP and achieve linkage with other smart devices.

When the door lock is unlocked, turn on the living room switch



For more linkage functions, you can click the "+" in the upper right corner of the "Smart" page of the APP, select a device as a trigger condition according to the actual scenario, or perform an action to create a smart linkage scene by yourself.

5. Switch mutual control settings



Note: The dual control of the smart switch is realized through the built-in Bluetooth module communication. Each smart switch can be used as the main control or the auxiliary control. The main control needs to be connected to the light line, and the auxiliary control only needs to be connected to the neutral line and the live line, and then the dual control is realized through button pairing.

Master and slave controller pairing method:

1. First connect the main and auxiliary control switches
2. After power on, press and hold the button on the main switch for 5 seconds and the indicator light flashes, indicating that the main switch has entered the dual control and random stick pairing mode.
3. Press and hold the button corresponding to the auxiliary switch (the button to be set) for 5 seconds. The indicator light flashes, and the two smart switches start to control each other. If the indicator light does not flash, the pairing is successful (if the indicator light flashes for more than 60 seconds, the pairing fails).

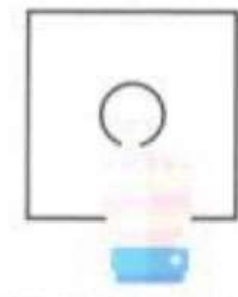
Method to release mutual control:

1. Press and hold the corresponding buttons of the main control device and the auxiliary control device for five seconds, and the indicator light flashes. When the code clearing state is entered, the indicator light does not flash, indicating that the code clearing is successful.

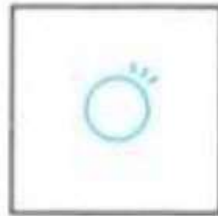
6. Switch matching wireless sticker

Coding method

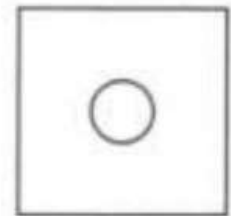
On the smart switch button that needs to be paired, press and hold for 5 seconds until the button indicator flashes, then press the Bluetooth wireless switch button to complete the pairing. The steps are as follows:



Press and hold the smart switch button for 5 seconds until the button indicator flashes



Button indicator light flashes

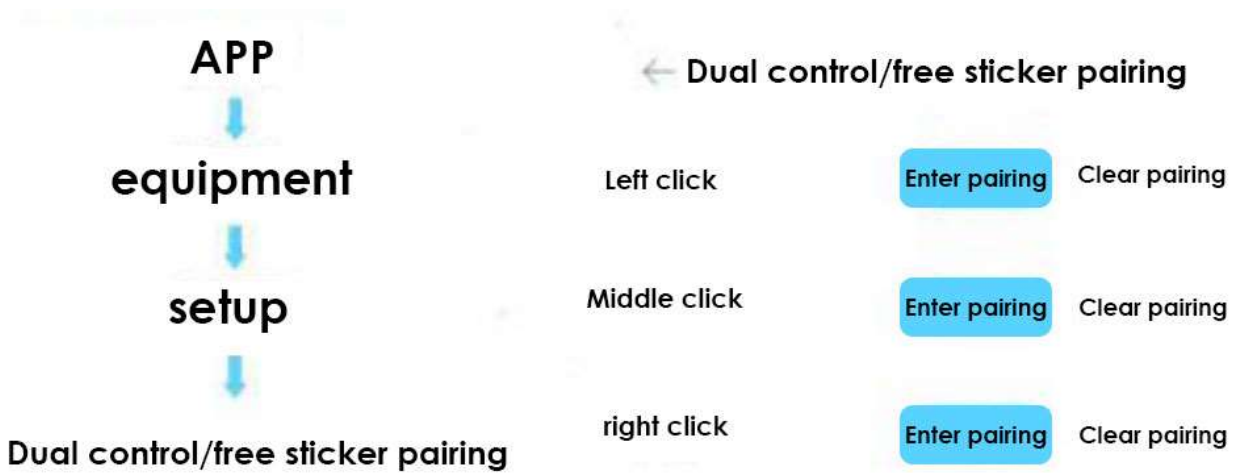


Press the Bluetooth sticker

Decoding method

Press and hold the device's switch for five seconds until the indicator light flashes, then press and hold the button corresponding to the sticker until the indicator light stops flashing to clear the sticker.

APP code clearing and matching



7. Three Guarantees Certificate

Product after-sales service strictly implements the after-sales three-guarantee service in accordance with the "Consumer Protection Law of the People's Republic of China" and the "Product Quality Law of the People's Republic of China". The service content is as follows:

1. Within 7 days from the date of purchase, if the product has any performance failure listed in the "Product Performance Failure Table", after inspection and confirmation by our after-sales service department, you can enjoy free return or exchange service;
2. Within 8 to 15 days from the date of receipt, if the product has any performance failure listed in the "Product Performance Failure Table", after being tested and confirmed by our after-sales service department, you can enjoy free replacement or repair service;
3. Within 12 months from the date of receipt, if this product has any performance failure listed in the "Product Performance Failure Table", you can enjoy free repair service after inspection and confirmation by our after-sales service department.

| name | Performance glitches |
|-----------------------|--|
| Switch (mesh version) | 1. Surface cracks caused by structural or material factors 2. The indicator light fails 3. Button failure 4. Control function failure |

8. Non-warranty regulations

1. Unauthorized repair, misuse, collision, negligence, abuse, liquid ingress, accidental modification, improper use of accessories other than those of this product, or tearing or altering of labels or anti-counterfeiting marks;
2. The warranty period has expired;
3. Damage caused by force majeure;
4. Failure to meet the performance failure conditions listed in the "Product Performance Failure Table";
5. The product and its accessories have performance failures listed in the "Product Performance Failure Table" due to human factors.